

Western Cape

SCaR



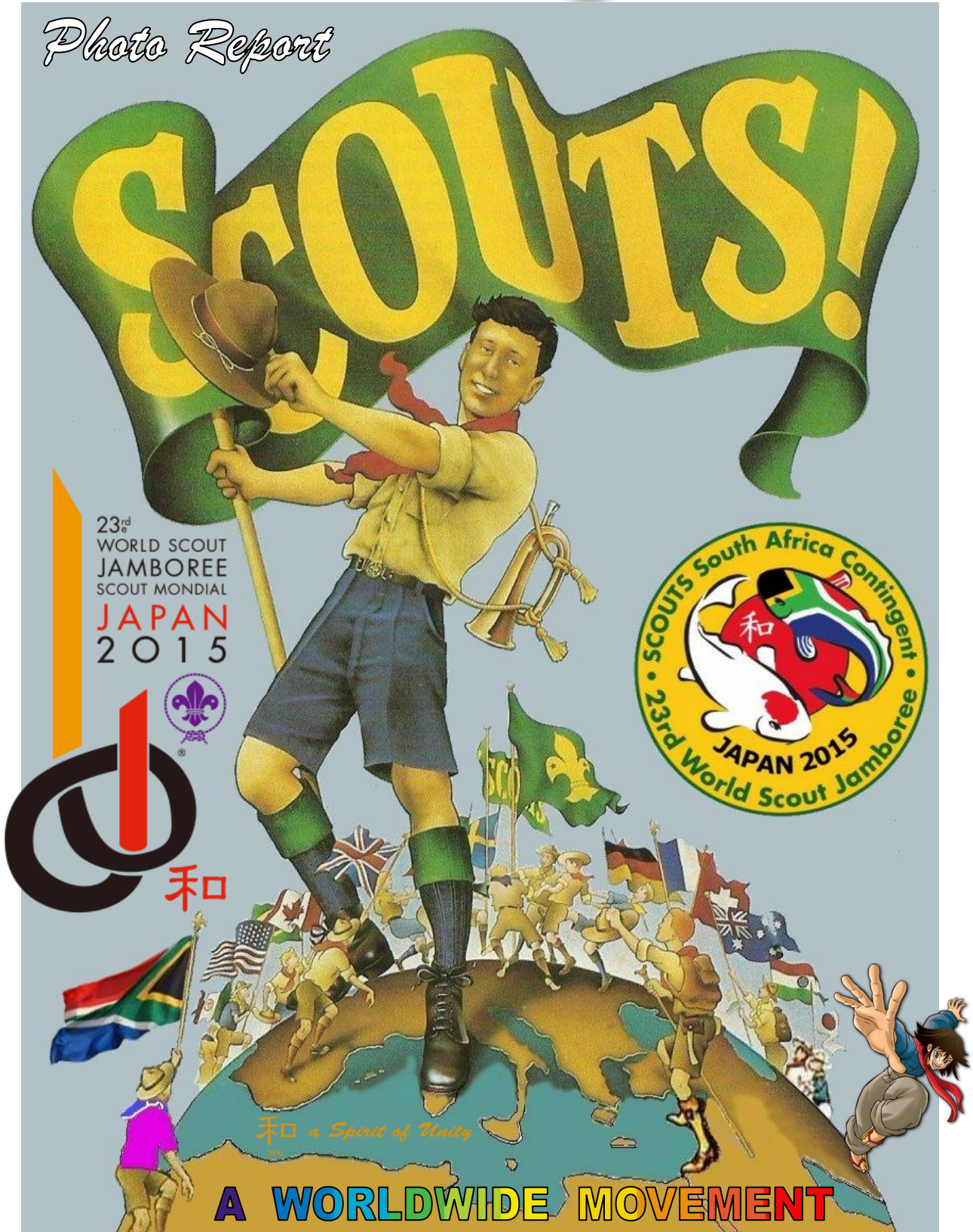
Bulletin No 47 October 2015



STRATEGY
ACHIEVING
OUR MISSION



Photo Report





"It was awesome...!" There are no words possible to actually describe a true Jamboree experience, thus only brief hard facts are recorded here, with pictures each telling a story. The theme was 'A Spirit of Unity', attended by 33 838 Scouts from 152 countries. South Africa sent 142 Scouts and 36 Adults in 4 'tree' Troops Acacia, Baobab, Marula and Tamboti, with Adult Support and an IST (International Service Team of 12). Departure was Mon 20 July from all over SA to rendezvous at a 'shakedown camp' **Gilwell** at Florida Lake in **Gauteng** - for final preparations and team building, before actual departure to Japan.



On Wed 22 July, the entire contingent, ready and full of excitement left SA for Japan to arrive at **Tokyo** Narita Airport on Thurs 23 July. The following 3 days Thurs 23 to Sat 25 July would be spent in a hotel and touring Tokyo, visiting restaurants, a full day at Tokyo Disneyland, Tokyo Tower, the Imperial Palace, Asakusa Sensoji Temple and Nakamise Shopping Arcade, before coaching to **Lake Ashi** campsite for sightseeing around Hakone and Mount Fuji. Most tours were in the company of an English speaking guide and meals on the go by means of bento box (pre-packed meal ready to eat). There was much seen and learnt while on the go across Japan, just some of the key highlights are mentioned here.

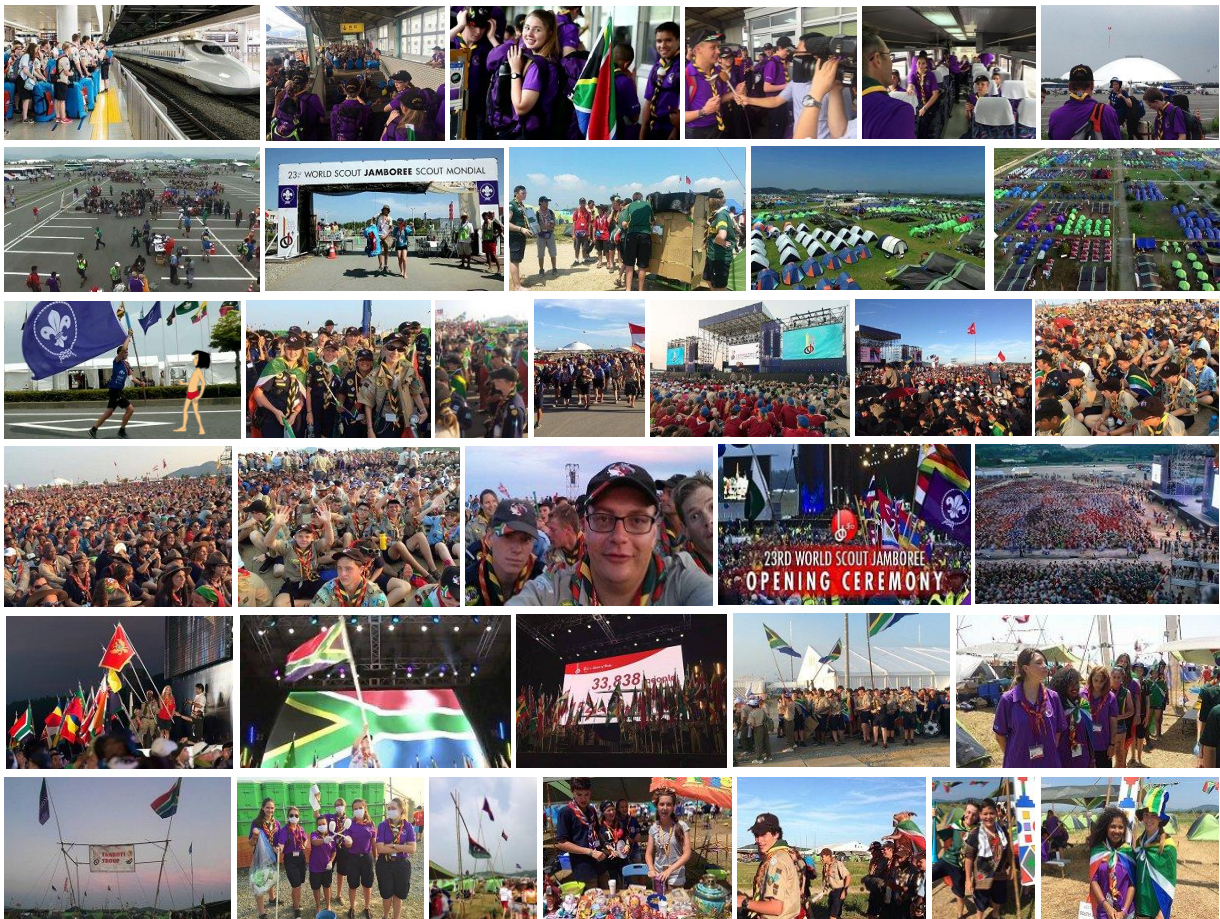


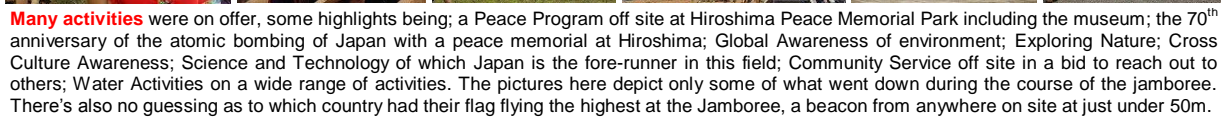


Sun 26 July saw camp pack up, then transfer to Odawara Station by coach to take the amazing Bullet Train (travel speed 250km/h) from Tokyo for 520km's to **Kyoto**. Here the contingent stayed two nights for sightseeing around Kyoto, visiting the Kinkakuji Temple 'The Golden Pavilion', Ninenzaka (for souvenir shopping), the Fusahimi Inari Shrine, Pontocho and Gion (old Kyoto streets) with restaurant stops. *Some facts on Japan; Japan* is an island nation in the Pacific Ocean east of China with high-rise-filled cities, imperial palaces, mountainous national parks and thousands of shrines and temples. Tokyo, the crowded capital, is known for its neon skyscrapers and pop culture. In total contrast, Kyoto offers Buddhist temples, Shinto shrines, gardens and cherry blossoms. Sushi, the national dish, is served virtually everywhere in restaurants. The small Japanese island has a population of 127.3 million with the Yen as currency (R1 is about 8 Yen).



Tue 28 July dawned with a hotel check-out in Kyoto and walk to Kyoto Station to board another Bullet Train to **Shin-Yamaguchi**. There our contingent was coached with thousands of others to the **23WSJ Site, Kirara-hama, Yamaguchi**, for a lifetime jamboree adventure running from Wed 29 July to Sat 8 August. The theme embraced three concepts being: **Energy** from Scouts around the world and involvement in many fields; **Innovation** from jamboree experiences, cultures, traditions and different ways of thinking; **Harmony** of Scouts living together in a culture of peace.





other Scouts from different countries. *Click the link for the story.* Also, this was Cultural Exchange Day when countries interacted with traditional foods being served. SA made a hit with their Rooibos Tea and Ouma Ruskis ☺



The **24th World Scout Jamboree** will be held at the Bechtel Family National Scout Reserve in West Virginia from July 24 to August 9, 2019. Hosting will be shared between the USA, Canada and Mexico, with the theme *'Unlock a new World'*.

